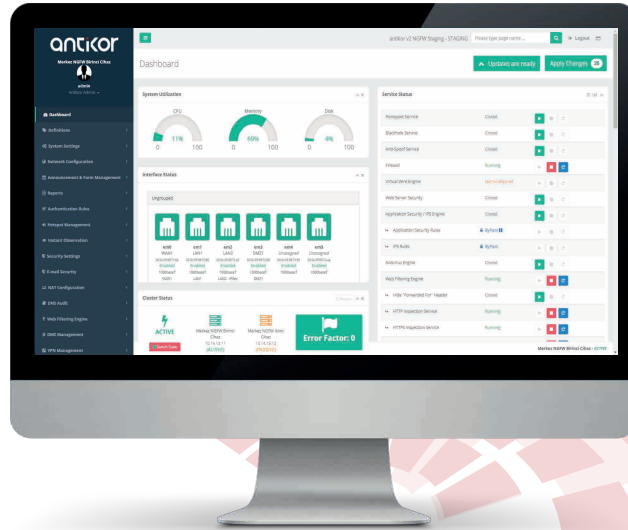


antikor

Unified Cyber Security System

EPA-NGFW-G60 Series Next Generation Firewall



COMMON CRITERIA
EAL 4+



TRtest

The Antikor Integrated Cyber Security System EPA-NGFW-G60 Series Next-Generation Firewalls (NGFW) is a product that ensures the security of Telco networks with advanced security functions. It incorporates a Policy/Section Structure, Virtual Wire, Online and Offline Updates, IPsec VTI and TS Mode, HTTP API, and many other advanced features. It comes with all these features enabled out of the box and does not require a license.

Security



The Antikor NGFW product ensures the security of your network with advanced security functions. It provides maximum security through an Independent Management Port (reserved processor, separate Control Plane and Data Plane) and an Independent Cluster Port.

Network



The Antikor NGFW product provides high-performance solutions with rich network features ranging from Layer 2 to Layer 7. It ensures full compatibility with your network through configuration flexibility. It strengthens your network with its security functions, enhancing overall network security.

Performance



While executing security functions, it operates your network with maximum performance. Thanks to its robust network stack, it easily and efficiently meets the security and network needs of your enterprise network.

Centralized Management and Log



You can centrally manage the Antikor NGFW products deployed in your organization through Centralized Firewall Management (CFWM). It allows you to gather logs from multiple devices and perform centralized logging (CLM), enabling you to query and analyze the collected logs from a single point.



Product Specifications



Operating Modes

OSI Layer 2 Transparent
OSI Layer 3 Routing + Stealth Mode
Virtual Wire

Routing

IPv4 / IPv6 (Dual Stack)
Policy Based Routing (PBR)
OSPF - Open Shortest Path First Protocol
BGP - Border Gateway Protocol
RIP / RIPng - Routing Information Protocol
PIM SM/SSM IGMP v2/v3 Multicast Routing
Routing Monitor

Network Interface Specifications

IEEE 802.1Q VLAN support(4096 Units)
Loopback Interface
LAGG: LACP, Failover, Load Balance, Round Robin
Bridging / STP / Ethernet Bypass
Virtual Extensible LAN (VXLAN)
NAT64, IPv6 to4 Tunneling
PPP ve PPPoE Connection Interface
3G/4G/LTE Modem Support

Security Specifications

Zone Based Firewall
Application Security (AppID)
IDS/IPS - Intrusion Detection and Prevention
SPI - Statefull Packet Inspection
DPI - Deep Packet Inspection
Multi-Policy, Section and Profile Support
Time Based Security Policy Management
Botnet Blocking and HoneyPot Trapping
Traffic Rate Limiting
http / https Web Filtering (SNI / DPI)
XFF Scan - Trusted Proxy Servers
Intf. Base Anti Spoof(Symmetrical and Asymmetrical)
ICAP and external Sandbox Integration
MAC to IP Mapping and MAC Quarantine
ARP Poisoning Protection
Flood Intrusion Prevention
Port Scanning Attack Prevention (TCP, UDP)
Gateway Anti Virus / Anti Malware **
SSH Inspection
DoS Prevention - Connection Limiting
SSL Inspection in Inbound and Outbound Traffic
Detecting and Blocking Fragmented Packets
Basic WAF - Web Application Firewall

Email Security

Gateway Antispam **
Anti Virus / Anti Malware **
Email Rate Limiting
RBL, MX, SPF, DKIM, DMARC Check
Email Quarantine
Gray Listing, Phishing Check
Category and Rule Based Filtering

VPN - Virtual Private Network

SSL VPN
Certificate Verification
User Credentials Verification (+ 2FA)
Authentication:
BLAKE2*, RSA*, SHA*, MD*, SHAKE*
Encryption:
AES*, ARIA*, CAMELLIA*, SEED*, SM4*
PPTP / L2TP VPN
IPsec VPN (Both VTI and Legacy Mode)
Site to Site VPN
GRE Tunneling

IPsec VPN

Encryption:
AES, CAMELLIA, NULL_ENC, SERPENT, TWOFISH
Authentication:
MD5, SHA1, SHA256, SHA384, SHA512, AES
Wildcard ID Support, NAT Traversal Support
IKE v1/v2 Support
PKI - Public Key Infrastructure Support
PSK - Pre Shared Key Support

Services

NAT (Based on Source and Destination)
NetFlow Export Service
Domain Based http/https Redirection
https SSL Offload Service
SNMP v2/v3 Service
RRD Service (User Counts and Bandwidth)
http/https Caching
DNS Query Filtering Service
DHCPv4/v6 Server, Relay, and Monitor
Blackhole Service
LLDP Service
Antikor® Announcement Service
Antikor® Registration Service
Online and Offline Update
Uninterrupted Traffic During Update
Automatic Configuration Backup
Authenticated http/https Proxy
Antikor® Shared Management - Virtual System
QoS - Efficient Bandwidth Management
Time and Quota Config. Hotspot (Captive Portal)
Bandwidth Monitor
Service-Based Timeout Control
RADIUS Server and Proxy
Domain-Based Rate Limiting
5651 Logging
Built-in Public SM - Timeline Application
SIEM-Syslog (TCP/UDP/TLS) - Support Formats;
RAW, CEF, EWMM, GELF, JSON, WELF, CIM
Geographic Database (GEO-IP)
Antikor® with Central Management (CFWM)
Antikor® with Central Logging (CLM)

System Performance

	G60A / G60B
Threat Prevention (IMIX) ** ***	60 Gbps
NGFW Throughput (IMIX) **	65 Gbps
IPS Throughput (IMIX) ***	72 Gbps
Firewall Throughput	220 Gbps
Number of Concurrent Sessions (Million)	40M / 80M
Number of New Sessions (Per Second)	2 000 000
IPsec VPN Throughput (Total)	32 Gbps
SSL VPN Throughput (Total)	11 Gbps

Licensing

Out of Band Cluster(HA) Support	Active-Passive
Number of Addressable CPU Threads	80
Number of IPsec VPN Tunnels	20480
Number of SSL VPN Users	30.000
Number of WAN / LAN / DMZ Interfaces	Unlimited
Virtual FW	Optional

Management Interface Features

Live Dashboard
HTML5 Responsive Web Interface
SSL Certificate based authentication
2FA - Two-Factor Authentication
Customizing the Service Port
Out of Band Management Plane
Resource Reservation
SSH Console
Physical Console (Monitor, Keyboard)
Serial Console (If exists on hardware)
Incident Notification Service (SMS, Email, Brower Notification)

Authentication Methods

Mernis
SMS
Local User
HTTP (API)
LDAP
RADIUS
POP3 / IMAP
SSO: Negotiate Kerberos - Active Directory
TACACS +

Product Certifications

Common Criteria EAL4 +
TRtest Product Conformity Certificate
100% Turkish Product

Minimum Requirements

Min 40 Core/ 80 Thr and later Processor
Min 512 GB Ram
Min 1,92 TB NVMe Disk
MultiQueue Ethernet Card

* All performance values may vary depending on environmental conditions, system configuration and equipment.

** These features require a minimum of 8 GB or more of memory.

*** Threat Prevention performance was measured with Firewall, IPS, Application Control, and Antivirus protection enabled.

eP-FR-79 Rev.02 / Release date: 01.04.2019 / Rev.date: 05.05.2025

